

# Darlington Planning Unit – Strategic Plan on a page

**Case for change**

Less money

Growing population

Better outcomes

**Vision**

**Working together to improve the health and wellbeing of Darlington**

**Strategic Aims**

To improve the health status of the people of Darlington

To address the needs of the changing age profile of the population of Darlington

To secure the right services in the right place for the people of Darlington

To manage our resources effectively

To invest in primary care and services

To secure meaningful engagement with people

**Key Characteristics of the Darlington health and care system**

**Involve people in our decisions**

**Efficient and appropriate elective care**

**Specialised services delivering agreed clinical quality standards.**

**Enhanced range of services centred around primary care**

**Flexible and responsive integrated care**

**Clearly defined & rapid access to high quality urgent care when needed**

**Enabling Functions**

Integrated technology & use of evidence based digital technology

Workforce - behavioural & cultural

Service delivery from fit for purpose quality estate

**Outcome Domains**

- Preventing people from dying prematurely
- Enhancing quality of life for people with long-term conditions.
- Helping people recover from episodes of ill health or following injury
- Ensuring that people have positive experience of care
- Treating and caring for people in a safe Environment and protecting them from avoidable harm

**Outcomes**

Improved health & reduced inequalities

Positive experience of care

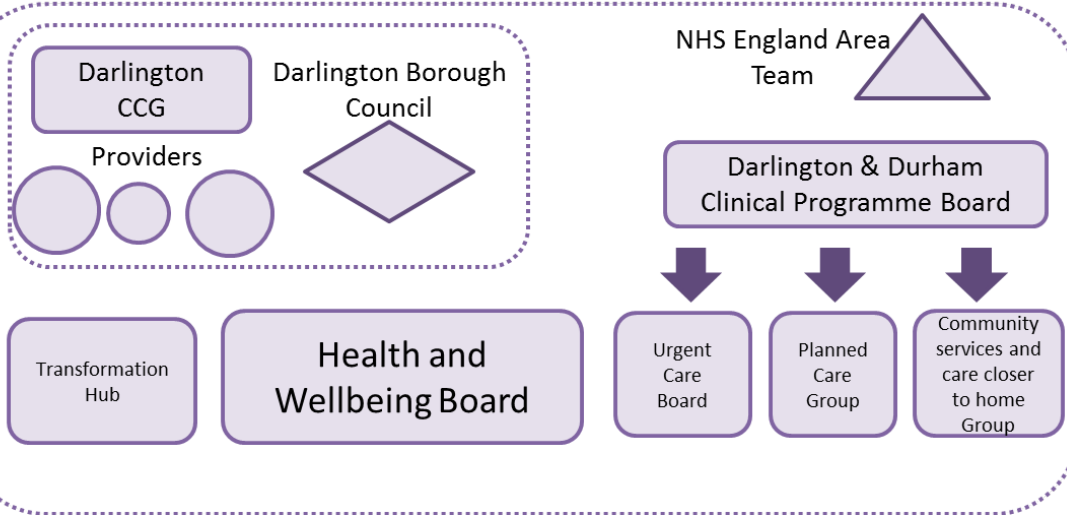
Reduce unnecessary use of acute care services

Protect people from health related harm

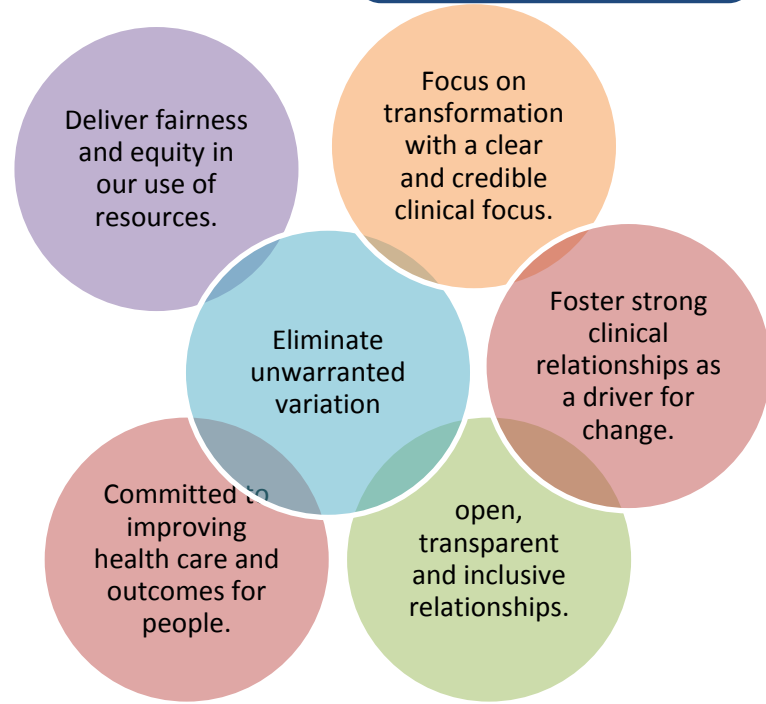
Equal recognition of physical and mental health

# Governance Arrangements

## Darlington Planning Unit



# Values



# Transformation and Delivery



# Principles

